

# WESTERN MUNICIPAL WATER DISTRICT

Understand your water bill through your water's journey

## FROM THE SIERRAS



**SIERRA NEVADA MOUNTAINS**



**MWD READINESS-TO-SERVE CHARGE**

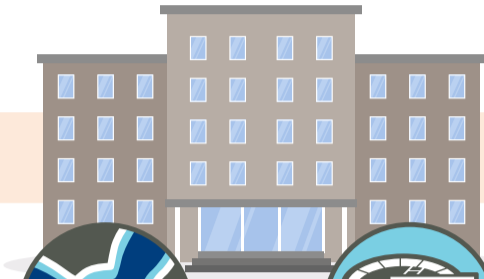
The Metropolitan Water District of Southern California (MWD) supplies most of Western's imported water. This charge supports system capital costs for emergency storage capacity and available capacity to deliver supplies reliably during emergencies, major facility outages, hydrologic variability, and variances in local resources. This means that facilities such as Lake Skinner and Diamond Valley Lake become water supply resources in the event of a disaster or long-term drought. This charge is issued based on the size of the meter on your property.

TO YOUR COUNTY



**WATER RELIABILITY CHARGE**

This charge supports the cost of pumps, pipes, tanks, and other systems that enhance local water supply reliability.

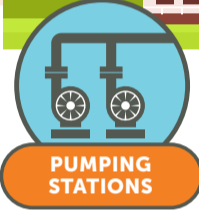


**REGIONAL INTERCONNECTION (MURRIETA)**



**MILLS WATER TREATMENT PLANT (RIVERSIDE)**

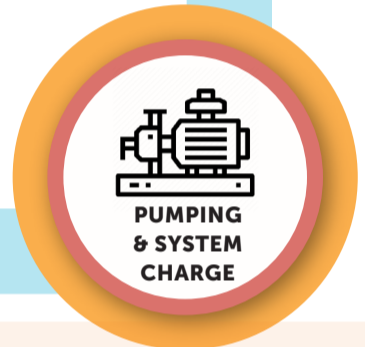
TO YOUR NEIGHBORHOOD



**PUMPING STATIONS**



**LOCAL WATER SUPPLY RESOURCES**



**PUMPING & SYSTEM CHARGE**

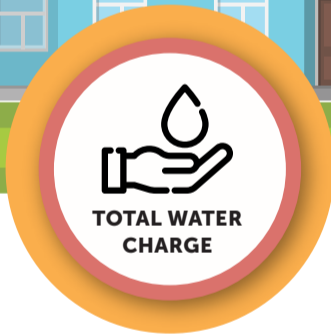
The System Charge is applied to fixed costs such as system maintenance, repair and replacement, as well as water treatment, water quality testing, environmental compliance, meters, and administrative costs.

The Pumping Charge supports the cost of energy needed to move water to the Western storage reservoir that serves your area.

TO YOUR HOME



**WATER TANKS**



**TOTAL WATER CHARGE**

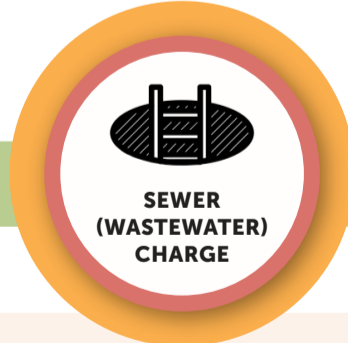
OUT OF YOUR HOME

**INDOOR** = People per household  $\times$  60 gallons per person  $\times$  Number of days in the billing cycle  $\div$  **748** Conversion factor

**OUTDOOR** = Irrigated landscape area  $\times$  Evapotranspiration (weather data)  $\times$  Landscape factor  $\times$  **.62** Conversion factor



**SEWER COLLECTION AND WASTEWATER TREATMENT**



**SEWER (WASTEWATER) CHARGE**

If Western is your sewer (wastewater) service provider, this is the monthly charge for removing and treating wastewater (sewer) from your home. This rate will vary depending on your location within Western's service area.

Murrieta Customers



**PARKS & MEDIANS**

Riverside Customers

**GROUNDWATER REPLENISHMENT**



**SANTA ANA RIVER**

TO THE OCEAN

Learn more about your water budget at [wmwd.com/WaterBudget](http://wmwd.com/WaterBudget)

[billing@wmwd.com](mailto:billing@wmwd.com)

951.571.7104

